



LUXURY WINDOWS
I T A L I A

Infisso Scorrevole Minimale
Minimal Frame

LUX 120

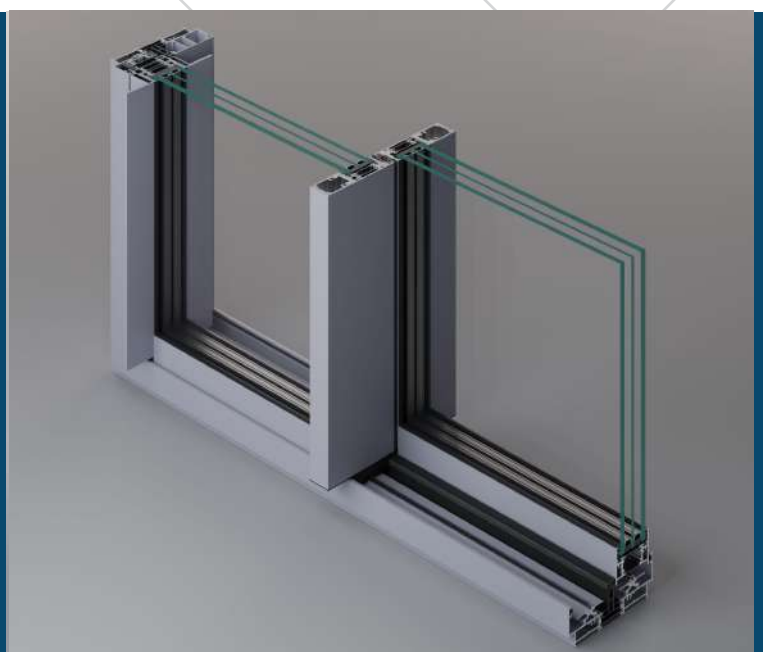


Luce e trasparenza le linee guida del design moderno assumono caratteristiche sempre più orientate a rendere fluide le divisioni ambientali tra interno ed esterno.

I sistemi integrati della linea Manimale garantiscono il massimo della luminosità con eccellenti performance di isolamento termico e acustico. Si tratta di serramenti in alluminio caratterizzati da spessori ridotti al minimo. L'intero sistema tende a scomparire sulle grandi dimensioni, consentendo di recuperare un'importante percentuale di luce filtrante, soprattutto se montato su piccole aperture.

Light and transparent the guidelines of modern design take on characteristics that are increasingly oriented towards making the environmental divisions between inside and outside fluid.

The integrated systems making the Minimal line guarantee maximum brightness with excellent thermal and acoustic insulation performance. These are aluminium thicknesses. The entire system tends to disappear on large dimensions, making it possible to recover an important percentage of filtering light, especially if mounted on small openings.



Sostenibilità

Perché scegliere la Finestra LUX 120

ESSENZIALE E LUMINOSO

Geometrie compatte che consentono di recuperare luminosità negli spazi. La tecnologia giunge ai suoi massimi livelli e la bellezza si traduce in design.

DUARATA NEL TEMPO

Resistenza meccanica, stabilità, robustezza e manutenzione ridotta ai minimi termini. Numerose qualità e straordinari vantaggi in un unico materiale in grado di durare per sempre.

ISOLAMENTO TERMICO E ACUSTICO

Con la tecnologia HES (High Energy Saving) l'isolamento termico è ai massimi livelli prestazionali. La riduzione dei costi energetici nel riscaldamento e raffreddamento è assicurata, così come il comfort abitativo reso ancor più elevato del perfetto isolamento acustico.

ALTA SICUREZZA

Sicurezza garantita con i sistemi antieffrazione in classe RC2 e RC3. Un sistema di chiusura perimetrale fino a 5 punti (predisposizione antifurto) capace di resistere a scassinatori e malintenzionati.

Sustainability

Why choose the LUX 120 Window

ESSENTIAL AND BRIGHT

Compact geometries that allow you to recover brightness in the spaces. The technology reaches its maximum levels and beauty translates into design and is completed with canceled accessories and minimal handles.

LONG LASTING

Mechanical resistance, stability, sturdiness and maintenance are reduced to a minimum. Numerous qualities and extraordinary advantages in a single material are capable of lasting forever.

THERMAL AND ACUSTIC INSULATION

With HES (High Energy Saving) technology, thermal insulation is at the highest performance levels. The reduction of energy costs in heating and cooling is ensured, as well as the living comfort made even higher by the perfect acoustic insulation.

HIGH SECURITY

Guaranteed security with RC2 and RC3 class anti-burglary systems. A perimeter locking system up to 5 points (anti-theft predisposition) capable of resisting burglars and ill-intentioned.

Performances LUX 120

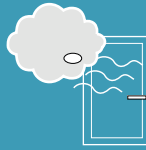


Water tightness EN 1027 - EN 12208

The window or door has not had any seepage of water even with a wind pressure equal to a speed of 96.59 Km/h (450 Pa)

Air Pressure Applied Km/h	(0Pa)	(50Pa)	(100Pa)	(150Pa)	(200Pa)	(250Pa)	(300Pa)	(450Pa)	(600Pa)	(900Pa)
	0	32,	45,5	55,7	64,3	72	78,8	96,5	111,5	136,
Class Achieved	1A	2A	3A	4A	5A	6A	7A	8A	9A	E900

Capacity of the window or door to block seepage of water when it is struck by a water flow and there is a pressure difference between the internal and external side.

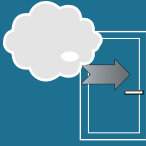


Air Permeability EN 1026 - EN 12207

The window or door was subjected to a wind pressure equal to a speed of 111.54 Km/h (600 Pa) and passed the test with positive results.

Air Pressure Applied Km/h	(150Pa)	(300Pa)	(600Pa)	(600Pa)
	55,77	78,87	111,54	111,54
Class Achieved	1	2	3	4

Characteristic of a closed vent to let air pass through when the internal and external pressures are mutually different; the smaller the volume dispersed, the greater the window or door quality.

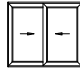



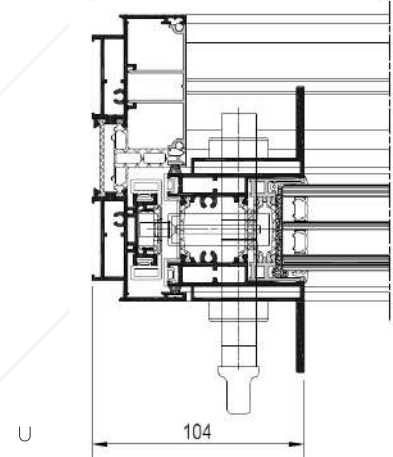
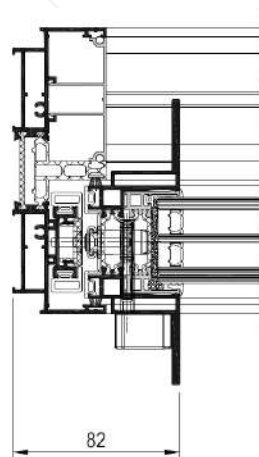
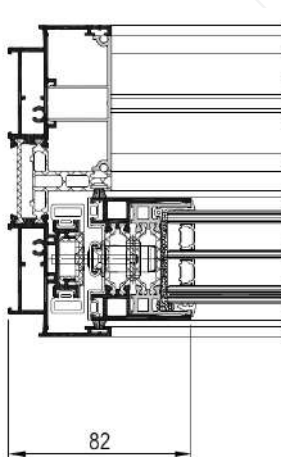
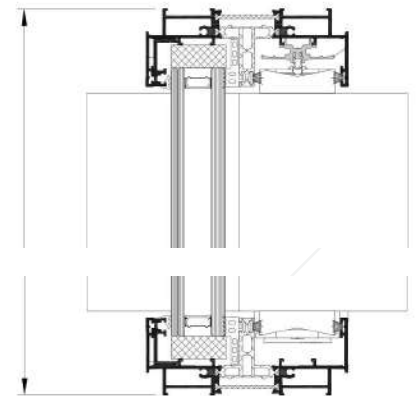
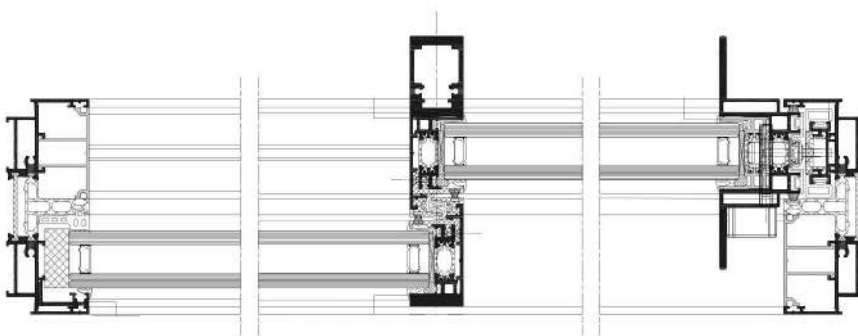
Resistance to Wind Load EN 12211 - EN 12210

When the window or door was subjected to a wind load equal to a speed of 157.74 Km/h (1000 Pa), neither breakages nor permanent deformation occurred.

Air Pressure Applied With Deflection Class Achieved	(400Pa)	(800Pa)	(1200Pa)	(1600Pa)	(2000Pa)	(>2000Pa)
	A (1/150)		B (1/200)		C (1/300)	
	1	2	3	4	5	Exxx

Capacity of a window or door subjected to high pressure and/or suction, such as those caused by wind, to remain within admissible deformation limits and to conserve its initial properties so as to ensure protection and safety to the users.

Prove di Tenuta	Certifying Istitute Number	EN 1026 - EN 12207 EN 1027 EN 12208- EN 12211 - EN 12210	Dimensions	Air permeability Class	Water tightness Class	Resistance to wind load Class
	GIORDANO N° 296919/7121/CPD	Double door Sliding door 	b x h 4000 x 2700	4	8A	B3
Potere Fonoisolante Rw (C; Ctr)	Certifying Istitute Number	EN ISO 10140	Dimensions	Classification/Value		
	C.S.I. N° 0016/DC/ACU/13	Double door Sliding door 	b x h 4746 x 2780	41(-2; -5) dB con vetro 66.2/20Ar/44.2 da 49 (-2; -7)		
Prove di Trasmittanza Termica	Certifying Istitute	Value Tested Accordance with EN ISO 10077-2 and EN 12412-2				
	I.F.T. ROSENHEIM					





LUXURY WINDOWS
I T A L I A



Luxury Windows Italia

via Flavio Domiziano 40/42 - Roma

www.luxurywindowsitalia.com | info@luxurywindowsitalia.com

Informazioni

More Info



luxwin.it

PDF LUX 120



Scarica

Download